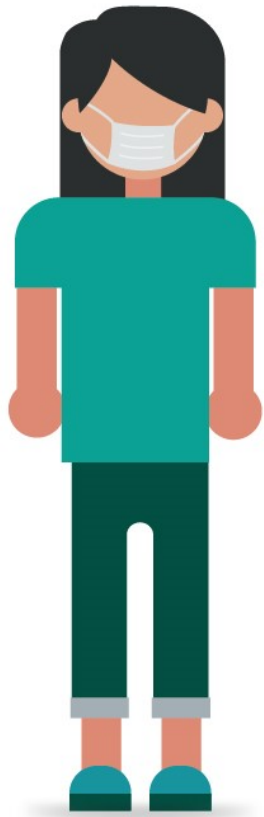


Coronavirus Incubation Timeline

It usually takes up to 10 days to develop symptoms after coming into close contact with a case of Covid-19, this is called the incubation period.



Day 0

Jane was a close contact of someone with coronavirus

Day 5

Jane got tested and was negative.

Day 7

Thinking she didn't have coronavirus, Jane attended school and was in close contact with 17 people.

Day 9

Jane developed symptoms and tested positive. She was contagious for 48 hours before her symptoms started and exposed 17 people to coronavirus. These 17 people now all need to self-isolate for 10 days.

This is why it's so important to complete your full isolation period.

